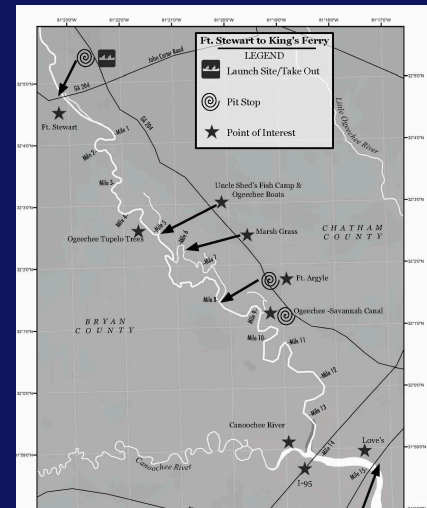


Paddle trip maps

Plan your own day on the river with these [updated maps](#).

Originally designed and researched by [Georgia River Network](#), we've updated the information for individual day trips.



Ogeechee Riverkeeper®

Newsletter
July 2020

Adopt-A-Landing

We are coordinating individual litter pickups and are encouraging families and households to adopt a spot on the river and commit to checking it for litter regularly. Our goal is to have each location 'adopted' by a dedicated crew who will make sure the litter is collected and disposed of properly.



[How to adopt a landing](#)



Deadfall, and what to do about it

Deadfall is the term for trees, branches or other natural debris that falls into the river. This debris can get caught or pile up, making it difficult, or even impossible, for boaters and paddlers to travel on the river.

So what does one do with it?

How to deal with deadfall

Donor Advised Funds

Do you have a [Donor Advised Fund \(DAF\)](#)? You can help Ogeechee Riverkeeper qualify for up to \$25,000 in matching grant fund. ORK is participating in the [#HalfMyDAF challenge](#) to encourage donors and foundations to give between now and September 30.

Questions? Contact [Ogeechee Riverkeeper](#).



#HalfMyDAF



Bald-faced hornet

The bald-faced hornet, also called the bald hornet or the white-faced hornet, is technically a wasp and only a close cousin to the true hornet.

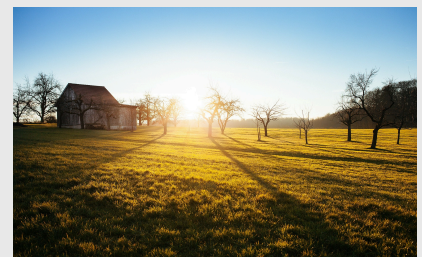
Learn more about this stinging, pollinating insect.

[Read about the hornet](#)

The Georgia State legislative session is over!

Thanks to your help, we were able to pass important legislation to [protect our watershed](#). Here's a summary of the bills we were working on.

We were largely successful, thanks to citizens who contacted their legislators and [donors who support](#) our ongoing efforts.



[Read the summary](#)



Bring the outdoors in

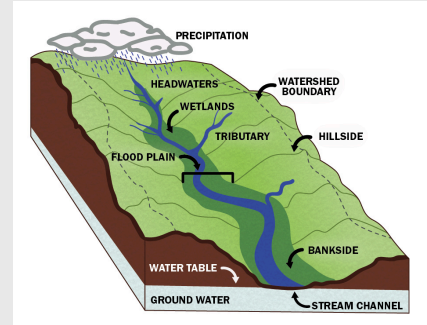
We have exclusive Ogeechee Riverkeeper backgrounds you can use on your Zoom calls. Download and use today!

[See downloads](#)

Play watershed trivia!

Submit your trivia answers to info@ogeecheeriverkeeper.org by **July 31**. Although it is tempting, try not to go straight to Google for answers. Go outside, and look for the answers. Use books and maps rather than the internet for your research, if possible.

Send in all correct answers and win a free t-shirt!



[Play the trivia game](#)

There are many ways you can help the Ogeechee Riverkeeper protect, preserve and improve the waterways within the basin.

[Donate](#)

[Join](#)

[Volunteer](#)

[Advocate](#)

Ogeechee Riverkeeper, Inc.
PO Box 16206
Savannah, Georgia 31416-2906
(866) 942-6222

info@ogeecheeriverkeeper.orgwww.ogeecheeriverkeeper.org



[Unsubscribe](#)